

Regional Center of Orange County

William J. Bowman, Chief Executive Officer
801 Civic Center Drive West, Suite 300, Santa Ana, CA 92701
Phone: (714) 796-5222 • Fax: (714) 541-3021
E-mail: llandauer@rcocdd.com
www.rcocdd.com



Spring 2006

Performance Report for Regional Center of Orange County

Every year, the Department of Developmental Services (DDS) contracts with regional centers in California to serve consumers and families. And, every year DDS looks at how well the regional centers are doing. This report will give you information about your regional center.

Last year, at RCOC we served about 15,000 consumers. The charts on page 2 tell you about the consumers we serve. You'll also see how well we are doing in meeting our goals and in fulfilling our contract with DDS.

At RCOC, we want to improve every year, do better than the state average, and meet or exceed the DDS standard. As you can see in this report, we did well in the following:

- Fewer consumers in developmental centers.
- Fewer minors living in large facilities (more than 6 residents).

But, we still need to improve in:

- Supporting families in maintaining children at home.
- More adults living in home settings.
- Fewer adults living in large facilities (more than 6 residents).

We hope this report helps you learn more about RCOC. If you have any questions or comments, please contact us!

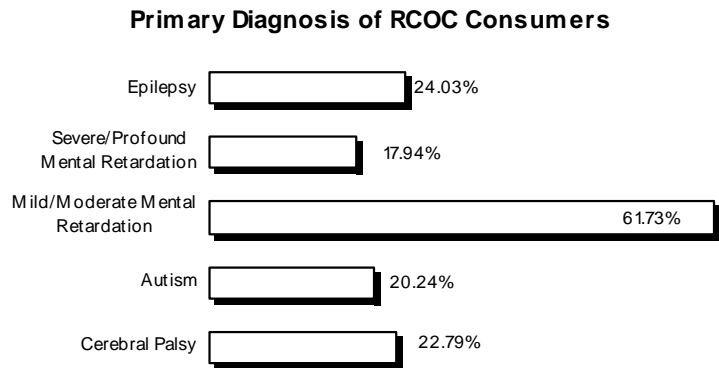
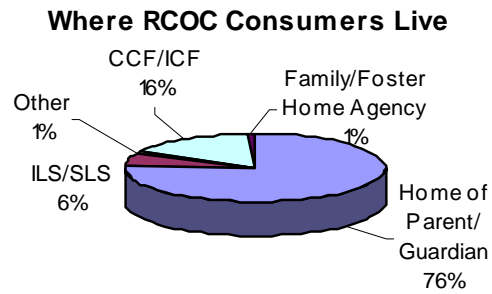
This report is a summary. To see the complete report, go to: www.rcocdd.com

Or contact Larry Landauer at: (714) 796-5255

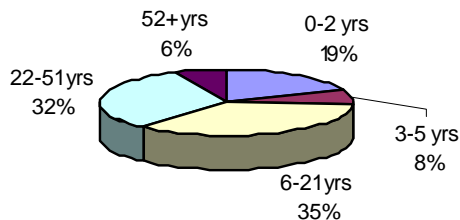
Bill Bowman
Chief Executive Officer

Who uses RCOC?

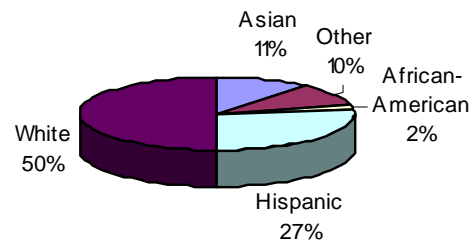
These charts tell you about who RCOC consumers are and where they live.



Age of RCOC Consumers



Ethnicity of RCOC Consumers



How well is RCOC performing?

This chart tells you about 5 areas where DDS wants each regional center to keep improving.

The first column tells you how RCOC was doing at the beginning of 2005. And, the second column shows how RCOC was doing at the end of 2005.

To see how RCOC compares to the other regional centers in the state, compare the numbers to the state averages (in the shaded columns).

Regional Center Goals (based on Lanterman Act)	December 2004		December 2005	
	State Average	RCOC	State Average	RCOC
Less consumers live in developmental centers	1.78%	1.43%	1.48%	1.32%
More children live with families	97.57%	97.22%	97.65%	97.44%
More adults live in home settings*	69.52%	65.13%	70.11%	65.87%
Less children live in large facilities (more than 6 people)	0.26%	0.18%	0.21%	0.18%
Less adults live in large facilities (more than 6 people)	6.15%	7.09%	5.72%	6.59%

* Home settings include: independent living, supported living, Adult Family Home Agency homes, and consumers' family homes.

Did RCOC meet DDS standards?

Read below to see how well RCOC did in meeting DDS compliance standards:

Areas Measured	Last Period	Current Period
Passes independent audit	Yes	Yes
Passes DDS audit	N/A	Yes
Didn't overspend operations budget	Yes	Yes
Participates in the federal waiver	Yes	Yes
Audits vendors as required	Partially Met	Partially Met
CDERs are updated as required (<i>CDER is the Client Development Evaluation Report with information about the consumer's diagnosis</i>)	98.66%	99.06%
IPP (<i>Individual Program Plan</i>) requirements met	100.00%	100.00%
IFSP (<i>Individualized Family Service Plan</i>) requirements met	91.73%	92.26%
Intake/Assessment timelines for consumers age 3 or older met	99.15%	96.18%

What about other performance areas?

In the future, we will measure how well we are doing in other areas, including:

- Increasing the number of consumers who work,
- Getting better pay for consumers who work,
- Making sure consumers get medical and dental services, and
- Meeting Intake/Assessment and IFSP timelines for children 0–3.

Want more information?

To see the complete report, go to: www.rcocdd.com

Or contact Larry Landauer at (714) 796-5255.